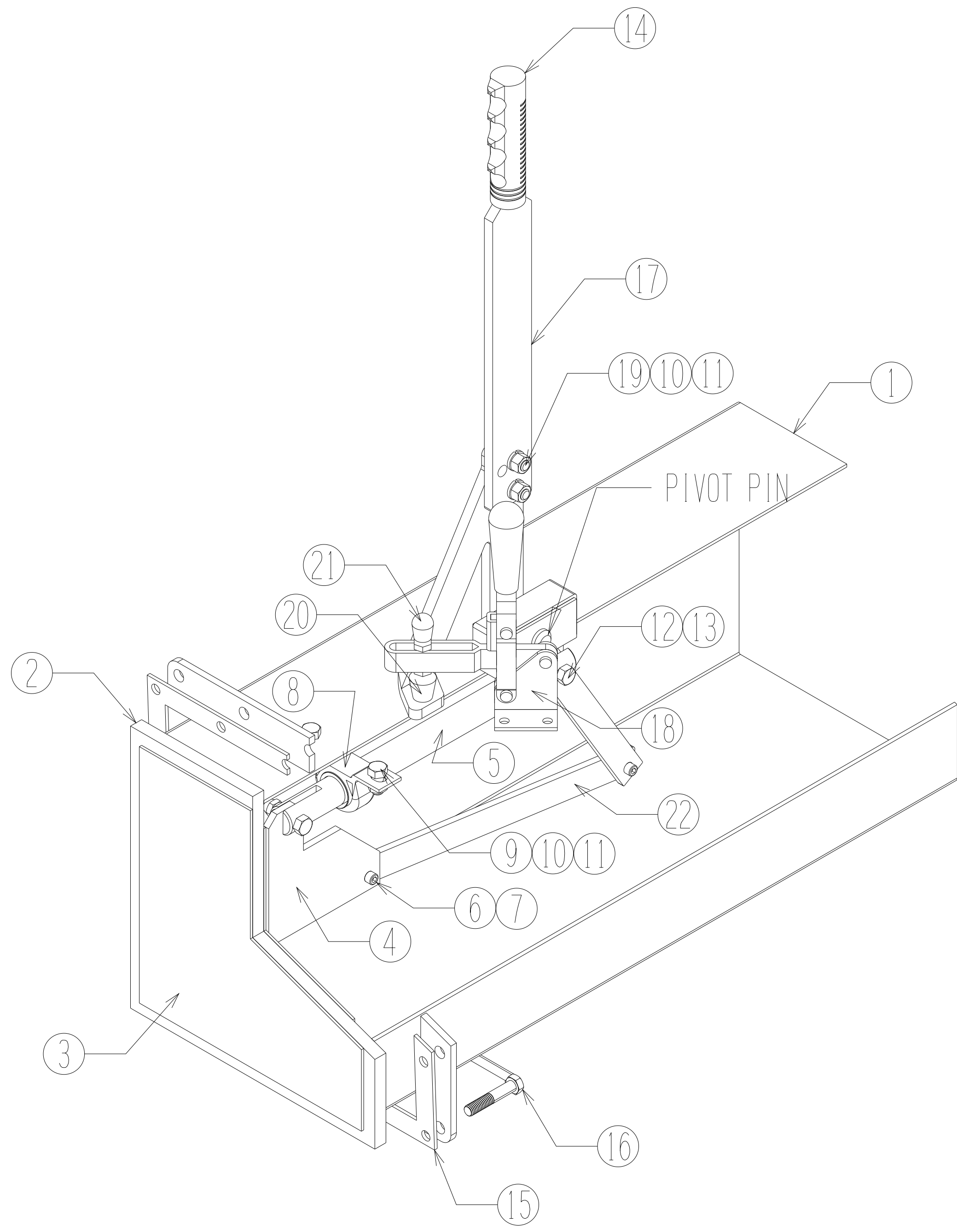


ITEM	QTY	DESCRIPTION	PART NUMBER
1	1	CHUTE WELDMENT	1050W
2	1	SEAL	105008
3	1	SUPPORT PLATE	105009
4	1	HINGE PLATE	105010-34
5	1	BRASS SHAFT	105011P
6	2	3/8 X 3/8 SHSB	3809-1320
7	2	5/16-18 LOCKNUT	3636-0805
8	1	1.00" PILLOW BLOCK BEARING	1503-0001W
9	2	3/8-16 X 3/4" BOLT	3601-1030
10	4	3/8" LOCKWASHER	3643-1255
11	4	3/8-16 NUT	3633-1260
12	2	3/8-16 X 1.50" BOLT	3601-1070
13	2	3/8-16 NYLON LOCKNUT	3636-1250
14	1	HANDLE GRIP	101028
15	1	GASKET	101029B
16	4	BOLT STRIP	101027-2.00
17	1	2 POSITION HANDLE	105016-2P
18	1	LOCK	105013
19	2	3/8-16 X 1.25 BOLT	3601-1060
20	1	SPINDLE ASSEMBLY	3501-0018
21	1	NEOPRENE CAP	3501-0019
22	1	LINK	105012P



**LUBRICATION NOTES**

All moving parts require periodic lubrication. Valve must work freely by loosening and lubricating all moving parts shown in diagram. Item 5 & 8 Bronze Bushing and Brass Link must slide free (No Friction) & lubricate. Items 12 & 13 Bolts and Nylon locknuts have to be loose. Pivot Pin needs lubrication and must work freely.

(We recommend a quality aerosol white lithium grease for lubrication)

Please visit us at: [www.ahstockmfg.com](http://www.ahstockmfg.com)

	DESC.	1050 VALVE PARTS LIST	UNLESS OTHERWISE SPECIFIED DIMENSIONS ARE IN INCHES. TOLERANCES ARE: FRACTIONS: ± .050    DECIMALS: .X ± .050 .XX ± .030 .XXX ± .015 ANGLES: ± 1° DO NOT SCALE DRAWING
	DWG NO.	1050 VALVE PARTS LIST	
A.H. STOCK MFG. 8402 CENTER RD. NEWTON WI 53063 PHONE: (920)-726-4211 FAX: (920)-726-4214	MATERIAL	BILL OF MATERIAL	PROJECTION
	DRAWN BY	R/S	DATE
			10/20/2010
			THIRD ANGLE